

DIMMABLE ELECTRONIC BALLASTS FOR T8 LAMPS

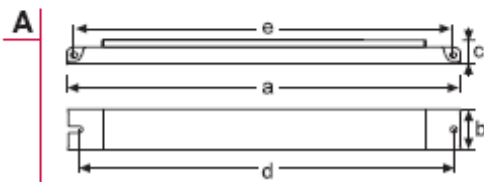
-  Optimum Cathode Control
- Switch-Control / Analogue control *)
- Only 21 mm high
- Standard & Side mounting
- Dimming range 1-100%**)
- Microprocessor controlled
- User friendly, quick release connectors
- Extremely low energy consumption
- Flickerless light



Lamp Type	Lamp Wattage	Ballast	Dimensions no.	Wiring no.	Weight (g)	Circuit Power (w)	Mains current (A)	Operating frequency (kHz)	Lamp power (w)	Order Code
T8 (26mm)	18W	EL 1x18HFC	1	1	285	19	0.09-0.08	50-110	16	PET2287.1
	36W	EL 1x36HFC	1	1	285	37	0.17-0.16	55-115	32	PET2283.2
	58W	EL 1X58HFC	1	1	285	55	0.28-0.26	50-110	50	PET2284.1
	18W	EL 2X18HFC	2	2	365	37	0.18-0.15	53-125	16	PET2287.1
	36W	EL 2X36HFC	2	2	365	71	0.33-0.30	55-115	32	PET2283.1
	58W	EL 2X58HFC	2	2	365	108	0.50-0.48	50-110	50	PET2287
	70W	EL1X70HFC	1	1	285	65	0.31-0.27	50-100	60	

Dimensions

NO.	1	2
DRAWING	A	A
LENGTH 'a' (mm)	360	430
WIDTH 'b' (mm)	30	30
HEIGHT 'c' (mm)	21	21
'd' (mm)	350	420
'e' (mm)	350	420



Connection diagrams

NOTE: All wiring to the connectors marked with a black dot; • (hot wires) should be as short as possible.

