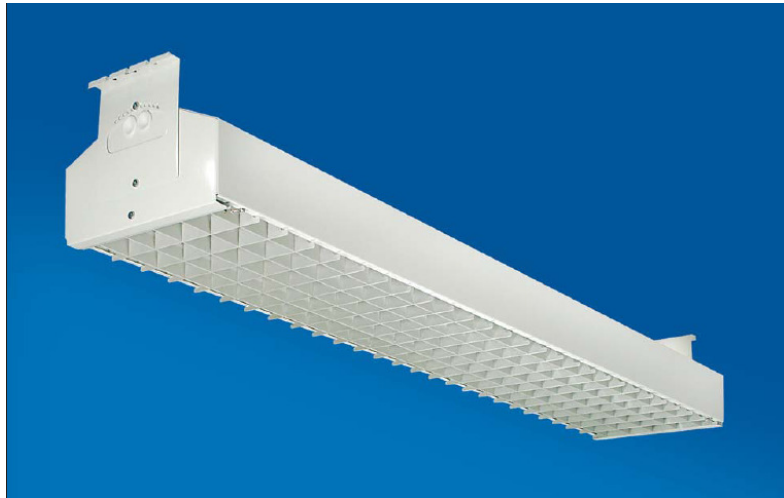


Herkules

The Herkules has been developed as an energy and light efficient luminaire for sporting centres and the engineering industry. It is equipped with a stable louvre that also serves as a protective grid for the T5 tubes. A tiltable bracket provides for 6 fixed positions.

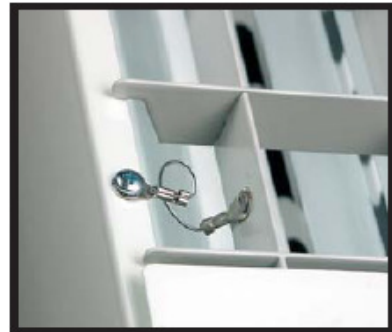
The Herkules is equipped with 2 cable entries Ø23mm with blanket grommets at each end-piece, and 2 on top; one for supply voltage and one for control voltage. The louvre is kept in position by a wire when changing the florescent tubes.



Tiltable brackets



Reflector with double T5 tubes



Wire for holding the louvre while tube changing

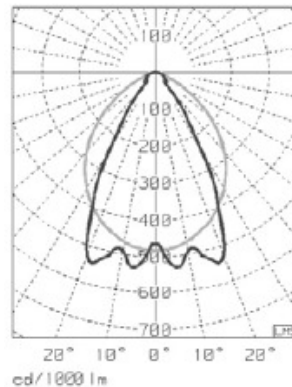
- Body and end pieces of white powder coated zinc-plated sheet steel.
- Aluminium reflector with a super-gloss anodised finish with symmetric light distribution. Aluminium louvre with grid size 55x55mm.
- Cable entries Ø23mm with blanket grommets; 2 at each end-piece and 2 on top.
- Surface mounting with the enclosed bracket or wire suspension with wire attachment No. 343 or 348. Tilttable in 6 fixed positions 0, 5, 10, 15, 20, & 25°.
- Through wire facility 5x2.5mm². Connection over a screwless 5-pole connection box. Comes with brackets. Dimmable electronic ballasts units available

Code	Description	Lamp	Dimension (mm)	Weight
E70 260 85	Herkules 4982/49	2x49W T5	1521x300x165	12 kg
E70 260 87	Herkules 4984/49	4x49W T5	1521x300x165	12 kg

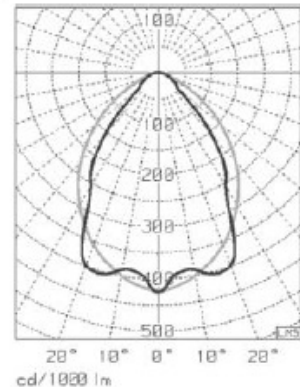
Accessories

E79 201 44	Wire attachment 343
E79 218 00	Wire attachment 348
E79 201 14	Tube clamp 399

Polar diagram



4982/49



4984/49