

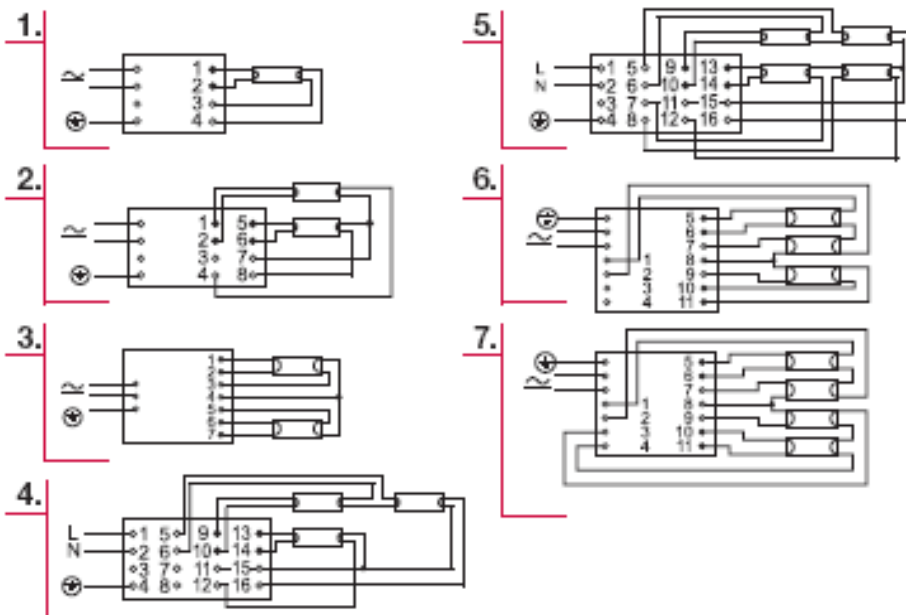
ELECTRONIC BALLASTS FOR T8 FLUORESCENT LAMPS

-  Optimum Cathode Control
- Only 21 mm high
- Optimal lamp operation
- Wide operational ambient temperature range
- Standard & sidemount possibilities
- Optional terminals for automatic wiring
- Low power losses
- Silent operation
- Stabilized flickerfree light
- High power factor



Connection diagrams

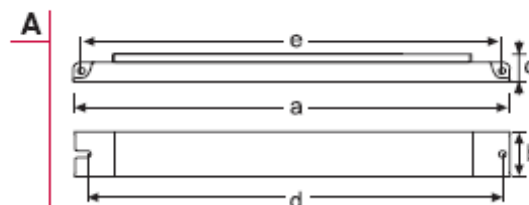
NOTE: All wiring to the connectors marked with a black dot • (hot wires) should be as short as possible.



Lamp Type	Lamp Wattage	Ballast	Dimensions no.	Wiring no.	Weight (g)	Circuit Power (w)	Mains current (A)	Operating frequency (kHz)	Lamp power (w)	Order Code
T8 (26mm)	18W	EL 4x18W	2	5	285	71	0.33-0.30	46	16	PET2288.3
	18W	EL 1x18W	1	1	190	18	0.09-0.08	68	16	PET2305
	36W	EL 1x36W	1	1	190	35	0.16-0.15	61	32	PET2286
	58W	EL 1X58W	1	1	200	54	0.23-0.26	49	50	PET2292.1
	70W	EL 1X70W	1	1	200	64.5	0.30-0.28	46	60	PET2300
	18W	EL 2X18W	2	2	230	34.5	0.16-0.15	67	16	PET2287
	36W	EL 2X36W	2	2	245	69	0.32-0.29	67	32	PET2283
	58W	EL 2X58W	2	2	260	107	0.50-0.45	48	50	PET2285
	70W	EL 2X70W	2	2	260	128	0.59-0.54	48	60	PET2299

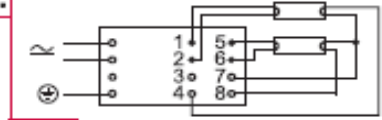
Dimensions

	NO. 1	2
DRAWING	A	A
LENGTH 'a' (mm)	280	360
WIDTH 'b' (mm)	30	30
HEIGHT 'c' (mm)	21	21
'd' (mm)	270	350
'e' (mm)	270	350





2.



5.

