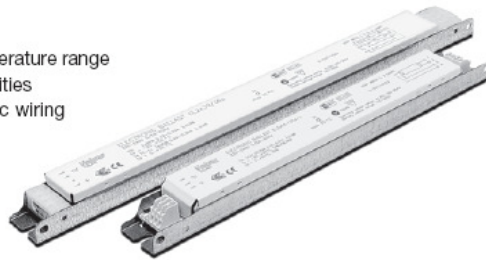


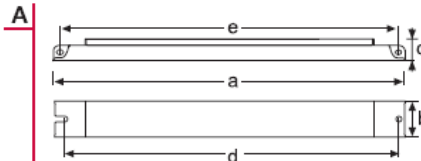
# Standard Electronic ballast for T5 Lamps

- **CCO** Optimum Cathode Control
- Only 21 mm high
- Optimal lamp operation
- Wide operational ambient temperature range
- Standard & sidemount possibilities
- Optional terminals for automatic wiring
- Low power losses
- Silent operation
- Stabilized flickerfree light
- High power factor



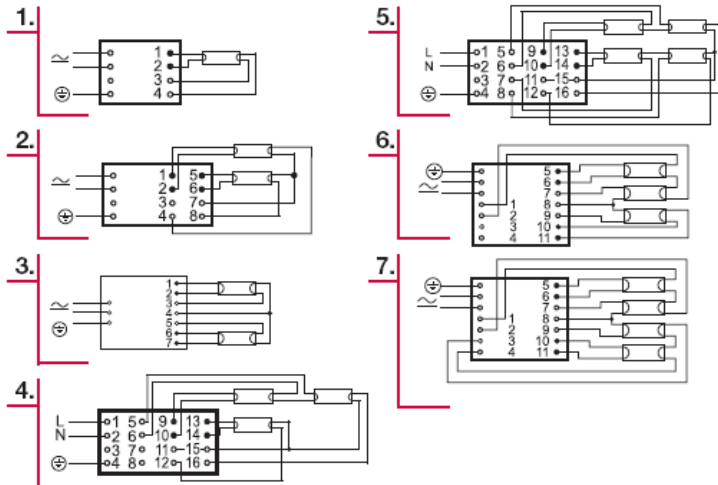
## Dimensions

NO.	1	2
<b>DRAWING</b>	A	A
LENGTH 'a' (mm)	280	360
WIDTH 'b' (mm)	30	30
HEIGHT 'c' (mm)	21	21
'd' (mm)	270	350
'e' (mm)	270	350



## Connection diagrams

**NOTE:** All wiring to the connectors marked with a black dot; • (hot wires) should be as short as possible.



Lamp Type	W	No. of lamps	Ballast	EEI	Dimensions		Connection no.	Weight (g)	Circuit power (W)	Mains current (A)	Operating frequency (kHz)	Lamp Power (W)
					no.	no.						
T5	14	1	EL 1x14-35s	A2	1	1	190	15.5	0.08-0.07	66	14	
		1	EL 1x14-35s-U**	A2	1	1	190	15.5	0.08-0.07	66	14	
		2	EL 2x14-35s	A2	2	2	250	31	0.15-0.13	63	14	
		2	EL 2x14-35s-U**	A2	2	3	250	31	0.15-0.13	63	14	
		3	EL 3/4x14s	A2	2	4	285	47	0.22-0.19	46	14	
		3	EL 3/4x14s-U**	A2	1	6	210	46	0.22-0.19	62	14	
		4	EL 3/4x14s	A2	2	5	285	62	0.29-0.26	46	14	
		4	EL 3/4x14s-U**	A2	1	7	210	62	0.29-0.26	62	14	
	21	1	EL 1x14-35s	A2	1	1	190	23	0.12-0.10	66	21	
		1	EL 1x14-35s-U**	A2	1	1	190	23	0.12-0.10	66	21	
		2	EL 2x14-35s	A2	2	2	250	45	0.20-0.18	63	21	
		2	EL 2x14-35s-U**	A2	2	3	250	45	0.20-0.18	63	21	
	24	1	EL 1x24s	A2	1	1	190	25	0.12-0.11	68	23	
		2	EL 2x24s	A2	2	2	230	49	0.24-0.21	67	23	
	28	1	EL 1x14-35s	A2	1	1	190	30	0.15-0.12	66	28	
		1	EL 1x14-35s-U**	A2	1	1	190	30	0.15-0.12	66	28	
		2	EL 2x14-35s	A2	2	2	250	60	0.27-0.25	63	28	
	35	2	EL 2x14-35s-U**	A2	2	3	250	60	0.27-0.25	63	28	
		1	EL 1x14-35s	A2	1	1	190	38	0.19-0.18	66	35	
		1	EL 1x14-35s-U**	A2	1	1	190	38	0.19-0.16	66	35	
39	2	EL 2x14-35s	A2	2	2	250	75	0.34-0.31	63	35		
	2	EL 2x14-35s-U**	A2	2	3	250	75	0.34-0.31	63	35		
	1	EL 1x39/36s	A2	1	1	190	42	0.19-0.18	59	38		
49	2	EL 2x39/36s	A2	2	2	245	81	0.36-0.32	67	38		
	1	EL 1x49s	A2	1	1	200	52.5	0.25-0.23	57	49		
54	2	EL 2x49s	A2	2	2	260	104	0.50-0.46	47	49		
	1	EL 1x54s	A2	1	1	200	58	0.23-0.26	49	54		
80	2	EL 2x54s	A2	2	2	260	114.5	0.50-0.45	48	54		
	1	EL 1x80s	A2	1	1	200	85	0.40-0.36	54	80		

\*\*) With terminals for both manual and automatic wiring (IDC & push-in)